

# 2X2 Gen 5 – Work Dash Installation

Part No: ACC-DK-0-001

## Equipment required:

### 1. Dash kit

- UBCO Speedometer unit
- Dash spacer
- Dash mount
- L/H handlebar bracket
- R/H handlebar bracket
- Dash cable
- 3x M6 serrated nut
- 4x M4x10 cap head fastener

### 2. Tools

- T25 Screwdriver
- 3mm Allen key
- 2.5mm Allen key
- 10mm Spanner
- Small side cutters

### 3. Consumables

- Small cable ties

### 4. Time

- This installation will take 30 minutes to complete.

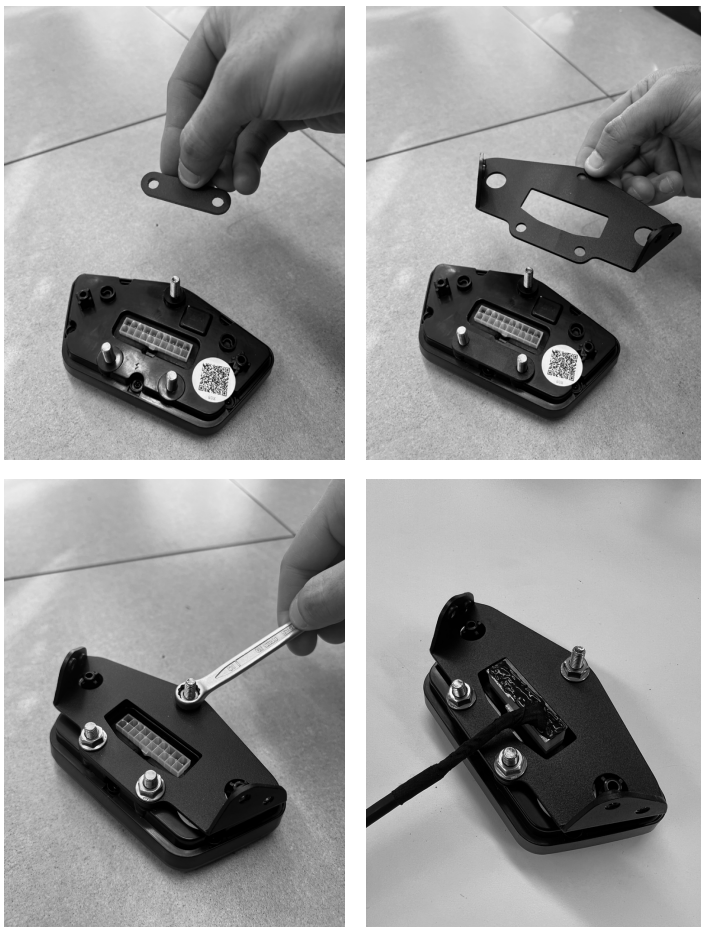


## 5. Instructions

Unbox the contents from the dash kit.

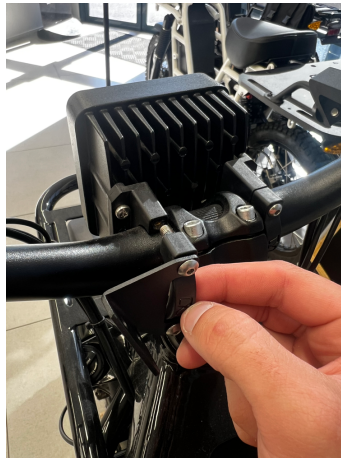


1. Install the small, slotted spacer.
2. Install the dash mount, secure using 3x M6 serrated nut.
3. Connect the harness to the rear of the dash.



4. Using a 3mm Allen key, loosen off the L/H handlebar mount.

5. Place L/H bracket on the rear of the handlebar mount, re-install fasteners and tighten.



6. Using a 3mm Allen key, loosen off the R/H handlebar mount.
7. Place R/H bracket on the rear of the handlebar mount, re-install fasteners and tighten.



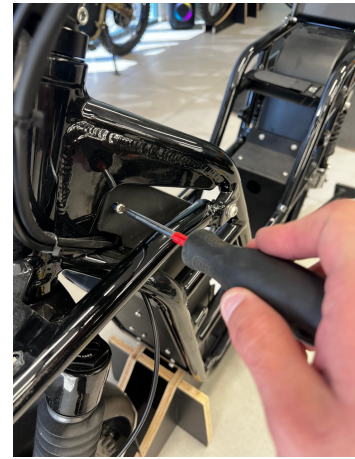
8. Install dash with cable to R/H side. Using a 2.5mm Allen Key, secure with 4x M4 fasteners.



9. Unplug and remove the battery.
10. Using a T25 screwdriver, remove 6x fasteners on the front console, remove the front console cover.
11. Route the dash harness through the frame and down the right hand side of the console.
12. Remove the blanking plug on the bottom right off the VMS, connect the dash harness.



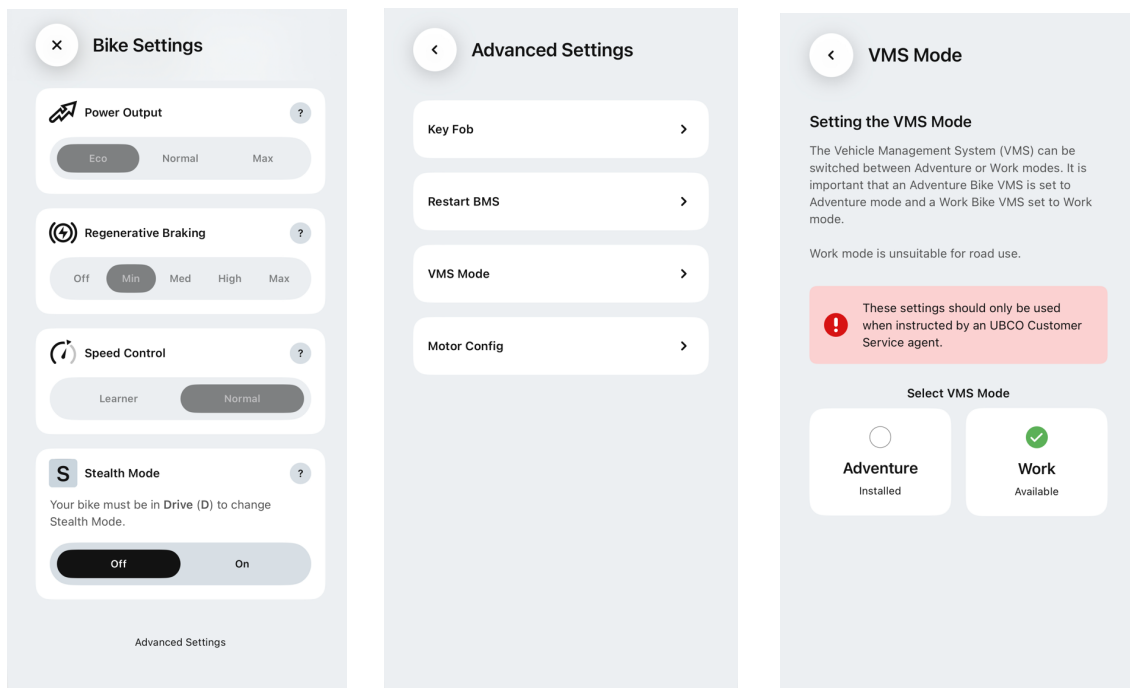
13. Cable tie the dash harness alongside the other wiring on the R/H side of the steering tube
14. Reinstall 6x console cover fasteners.



15. Place battery back into bike and power on.



16. Ensure the VMS mode is set to WRK and not ADV in the app.  
To do this, go to Bike settings → Advanced settings → VMS mode.



### To set the clock time

1. Hold down the right button until the time starts flashing.
2. Press the right button to change between hours and minutes.
3. Press the left button to cycle through numbers.
4. Hold down the right button until the numbers stop flashing to set the time.