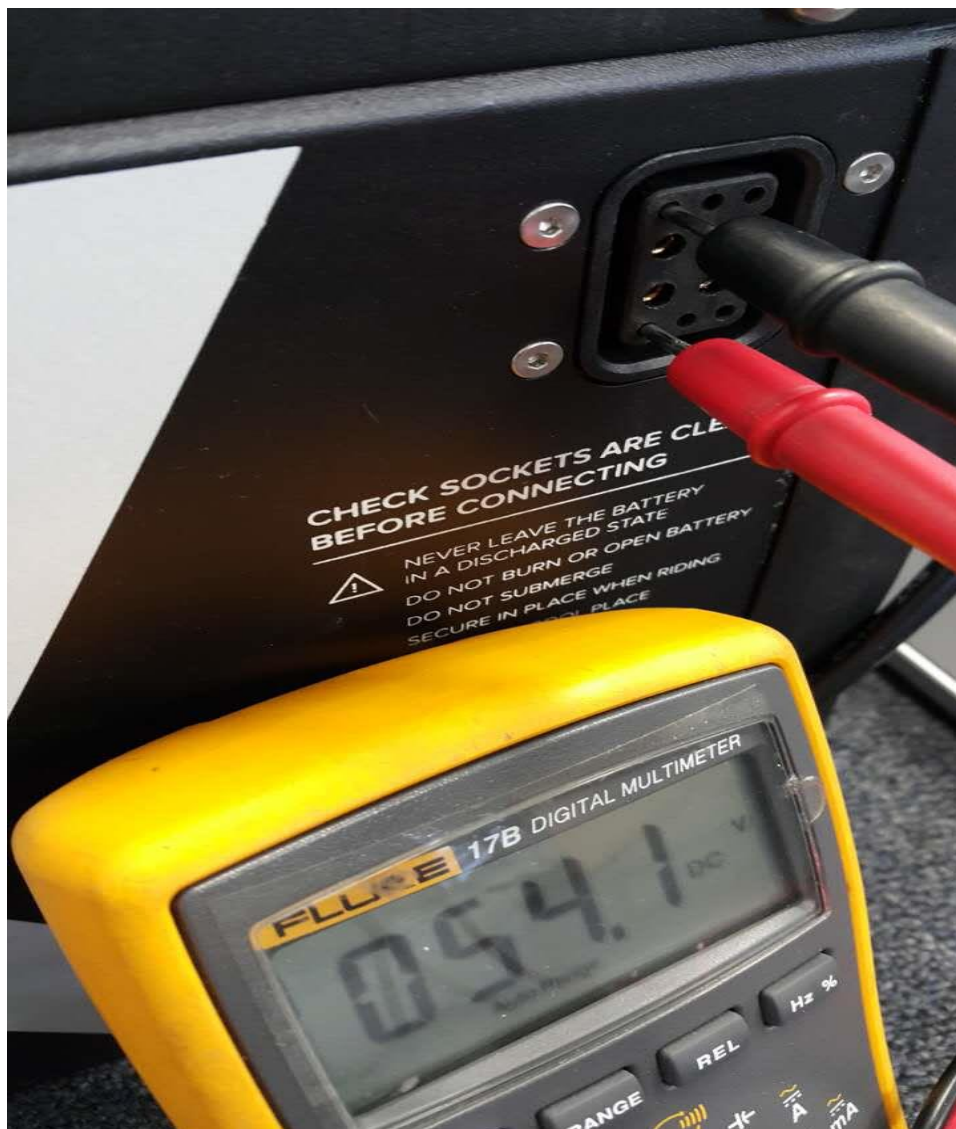


## BMS Testing Document

This Document tests whether your battery is Latching on due to a faulty BMS unit.

1. Unplug and remove the battery from the bike
2. Using your multi-meter test the battery as seen here in picture one.



Testing battery voltage for any battery. Charged it should be between 52-58 volts

Using your multi-meter again test as per photo.

Second pic test main output, should be below 1v if battery is unplugged, therefore turned off.



If BMS has failed and latched on this will read the same as pic 1.