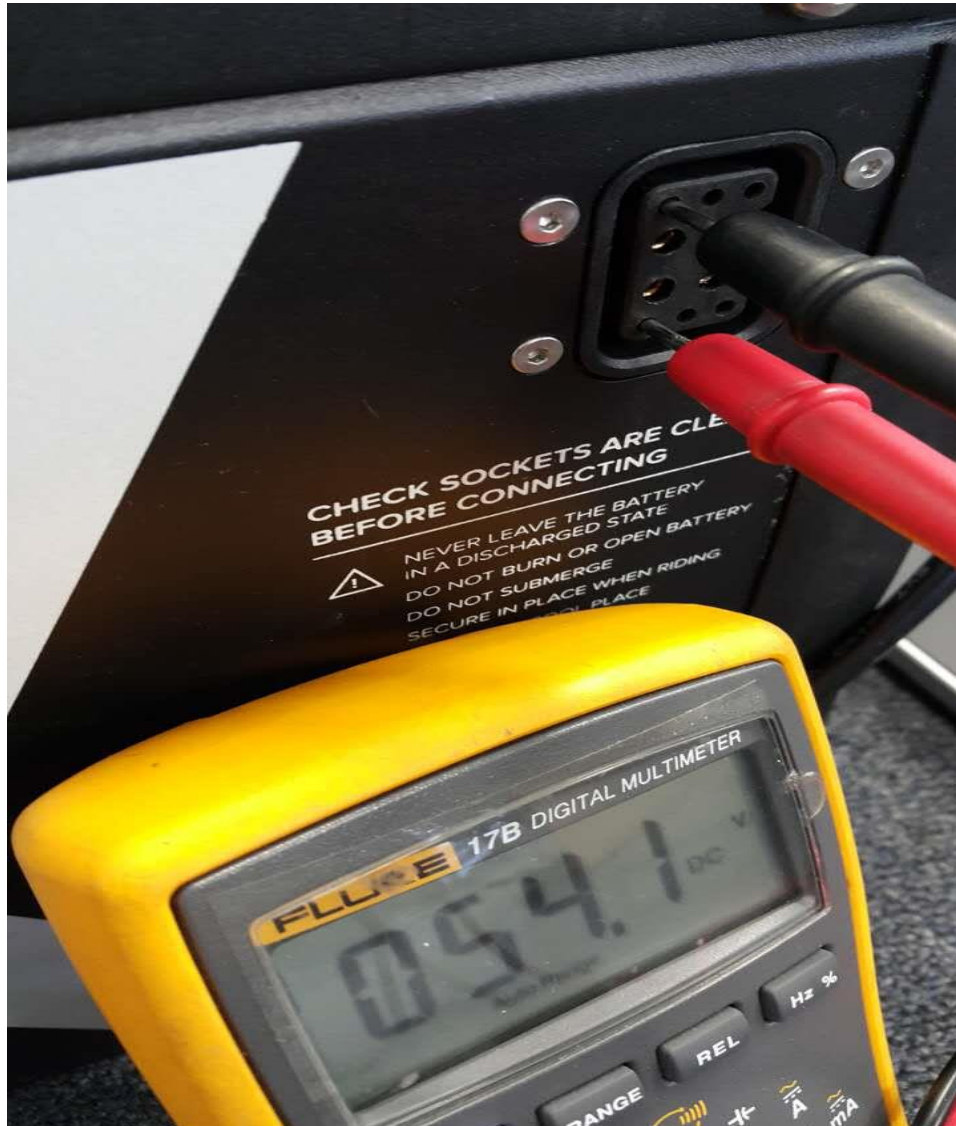


UBCO Battery Testing

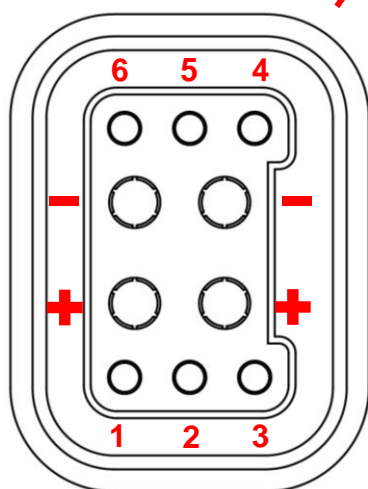
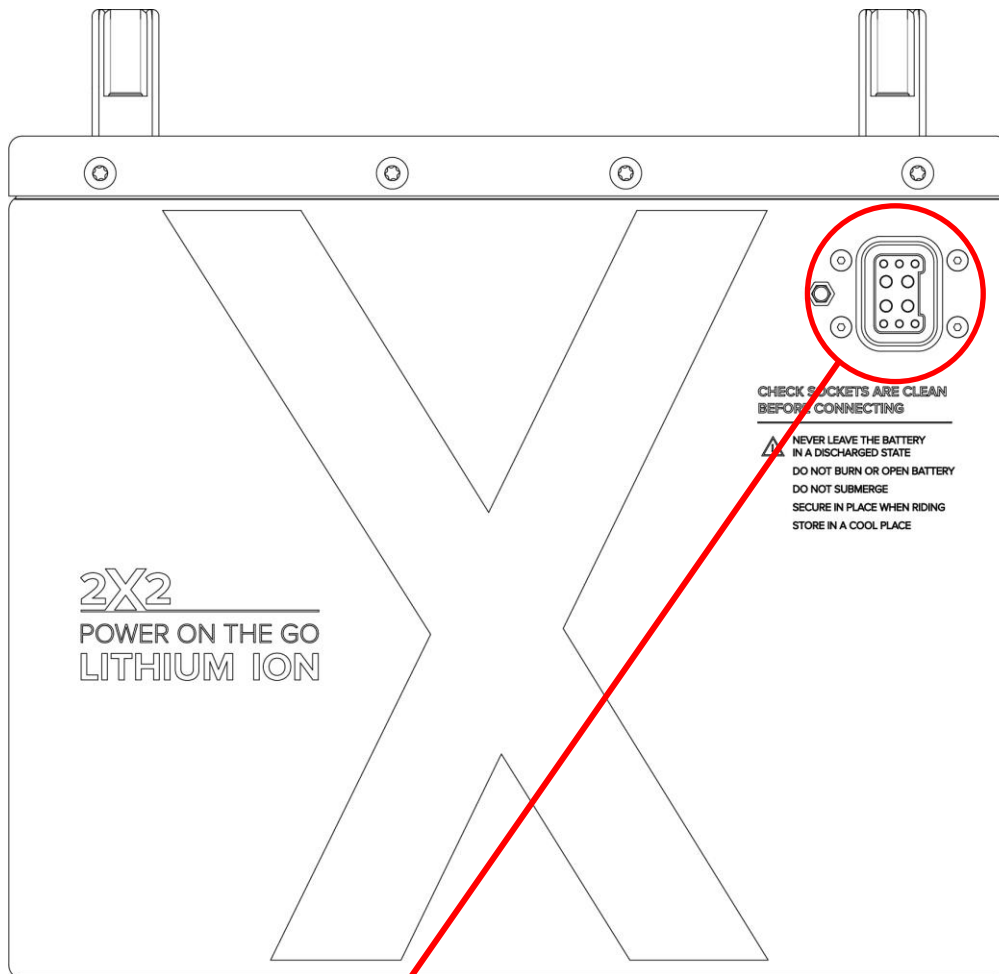
This Document tests the charged state of your battery.

1. Unplug and remove the battery from the bike
2. Using your multi-meter test battery pins 1 & 6 (Refer to pin layout P.T.O) or displayed in the picture below.



NOTE: When the battery is charged it should be between 57.6-58.8 volts and a flat battery will be 38.8 - 43 volts. To afford unwanted repair times ensure your battery is charged when working on your UBCO 2x2.

UBCO Battery Pin layout



Pin position	Function
1	Charge positive
2	DC-DC positive
3	BMS switch in
4	BMS switch out
5	DC-DC negative
6	Charge negative